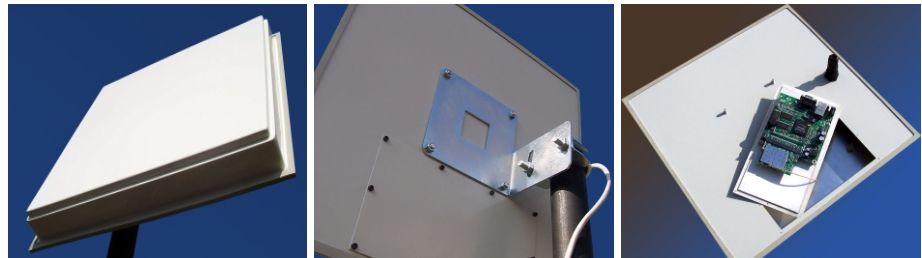




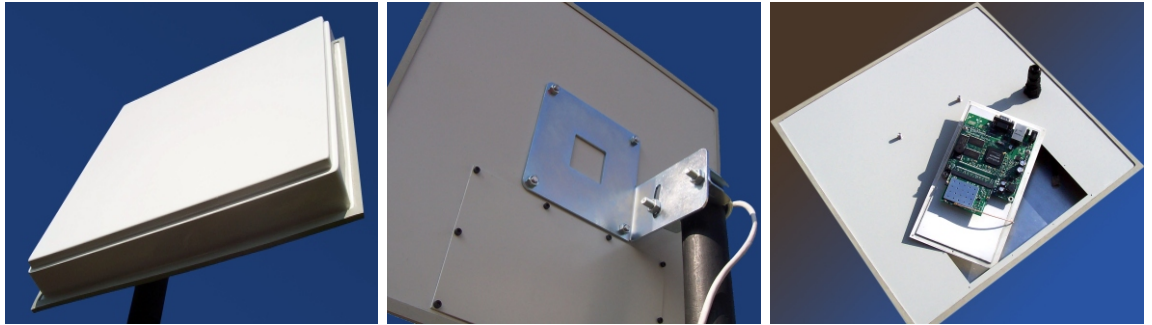
VESUVIUS STREAMLINE

Datasheet



- 2.4 GHz, 19dBi Antenna with RouterBOARD 411
- Mikrotik RouterOS Level 3
- 802.11 a+b+g 65mW Wireless miniPCI Card
- 18V Power Supply + PoE Injector

RBI-1924C



Description

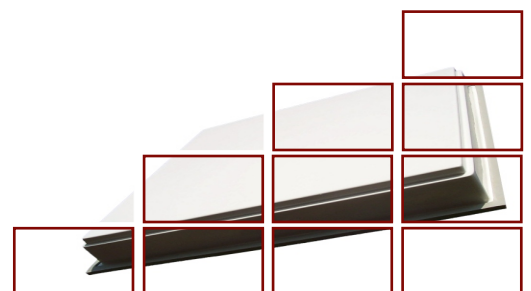
The RBI-1924C 2.4GHz integrated router antenna is an advanced, cost effective wireless solution, designed for variety of outdoor applications, which includes high performance wireless router with Power over Ethernet (PoE) feature and high-gain directional antenna, all embedded in UV stabilized plastic enclosure.

The RBI-1924C now includes the powerful RB/411 board with Atheros AR7130 300MHz CPU and 32 MB RAM, perfect for simple CPE applications. You can use the RBI-1924C as a subscriber unit in point-to-multipoint networks. Also, pair of those can be used for 2.4GHz Backbones (Point-to-Point links).

The RBI-1924C is very easy to install thanks to power and data supply over a single Category 5 ethernet cable. This allows great flexibility of the package positioning, decreases installation costs and significantly reduces cabling and outlet requirements especially in hard-to-reach places.

Package includes:

- Mikrotik RouterBOARD 411 with Atheros AR7130 300MHz CPU, 32 MB RAM, One LAN Port
- MikroTik RouterOS with Level3 License
- Mikrotik R52 802.11a+b+g 54 Mbps miniPCI Wireless Card
- Vesuvius Streamline 2.4 GHz, 19 dBi Integrated Flat Panel Antenna
- 18V Power Supply Unit with PoE injector (PoE over Datalines not Supported)



RBI-1924C

RouterBOARD Specifications



RB/411

CPU	MIPS24k Based, Atheros AR7130 300MHz CPU
Memory	32MB SDRAM Onboard Memory
Data Storage	Data Storage 64MB Onboard NAND Memory Chip
Ethernet	One 10/100 Mbit/s Fast Ethernet Ports Supporting Auto-MDI/X
MiniPCI Slot	One MiniPCI Type IIIA/IIIB Slot
Power Options	Power over Ethernet: 12..28V DC (except power over datalines)
Power Jack	9..28V DC
Temperature Operational	-20°C to +65°C (-4°F to 149°F)
Power Consumption	3-4W Without Extension Cards, Maximum – 14W

RF Module Specifications



R52

Frequencies	802.11b/g 2.312 – 2.497 (5 MHz Step); 802.11a 4.920 – 6.100 (5 MHz Step)
Chipset	Atheros AR5414
Security	Hardware 64 and 128 bit WEP; Hardware TKIP and AES-CCM Encryption; 802.1x WPA Authentication
Modulation	802.11b+g: DSSS, OFDM for Data Rate >30Mbps 802.11a: OFDM
Host Interface	Mini-PCI Form Factor; Mini-PCI Version 1.0 Type 3B
Output Power/Rx Sensitivity	802.11a : 17dBm/-88dBm @ 6Mbps 13dBm/-71dBm @ 54Mbps 802.11b : 19dBm/-95dBm @ 1Mbps 19dBm/-90dBm @ 11Mbps 802.11g : 18dBm/-90dBm @ 6Mbps 15dBm/-73dBm @ 54Mbps
Transfer Data Rate	802.11b : 11,5.5,2,1 Mbps, auto-fallback 802.11g (Normal mode) : 54,48,36,24,18,12,9,6 Mbps, Auto-Fallback 802.11g (Turbo mode) : 108,96,72,48,36,24,18,12 Mbps, Auto-Fallback 802.11a (Normal mode) : 54,48,36,24,18,12,9,6 Mbps, Auto-Fallback 802.11a (Turbo mode) : 108,96,72,48,36,24,18,12 Mbps, Auto-Fallback
Supported OS	MikroTik RouterOS, Windows XP
Connectors	Two U.fl Connectors

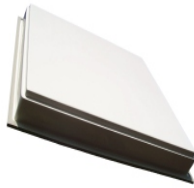
Antenna Specifications



VS-19PCB24

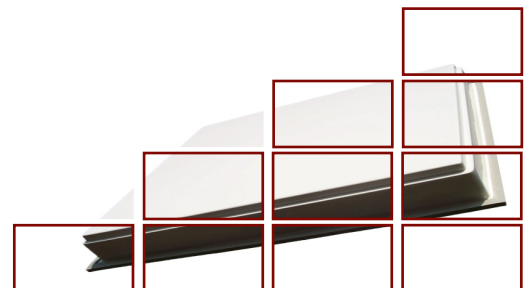
Frequency Range, GHz	2.400 - 2.490
Gain	19dBi +/- 1dB
VSWR	1.8 : 1
3dB Beamwidth	10.0 deg +/- 1.0 deg
Front-to-Back Ratio	30dB
Polzarization	Vertical and Horizontal
CPR	33dB
Connector	SMA Female

Physical & Electrical Specifications



RBI-1924C

Enclosure Size, mm	405 x 405 x 63
Weight, Kg	2.800
Enclosure Characteristics	Outdoor UV Resistant Plastic Cover
Mounting Kit	Adjustable (Azimuth & Elevation)
Power Supply Unit	18V, 1.2A Power Supply and PoE Injector Included
Power Method	Passive Power over Ethernet



RBI-1924C