



VESUVIUS STREAMLINE

Datasheet

RBI-1956 Series



- 5-6 GHz, 19dBi Antenna with RouterBOARD 411AH
- Mikrotik RouterOS Level 4
- 802.11 a+b+g 65mW Wireless miniPCI Card
- 18V Power Supply + PoE Injector

RBI-1956AP



Description

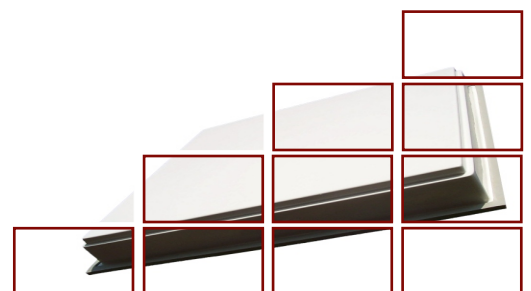
The RBI-1956AP 5GHz integrated router antenna is an advanced, cost effective wireless solution, designed for a variety of outdoor applications, including extreme performance wireless router with Power over Ethernet (PoE) feature and small directional antenna, all embedded in UV stabilized plastic enclosure.

The RBI-1956AP now includes the powerful RB/411AH board with Atheros AR7161 680MHz CPU and 64 MB RAM, perfect for access point applications. Also you can use the RBI-1956AP as a subscriber unit in point-to-multipoint networks. A pair of the integrated router antennas can be used for 5GHz short distance links.

The RBI-1956AP is very easy to install thanks to the power and data supply over a single Category 5 ethernet cable. This allows excellent flexibility of the package positioning, decreases installation costs and significantly reduces cabling and outlet requirements, especially in hard-to-reach places.

Package includes:

- Mikrotik RouterBOARD 411AH with Atheros AR7161 680MHz CPU, 64 MB RAM, One LAN Port
- MikroTik RouterOS with Level4 License
- Mikrotik R52 802.11a+b+g 54 Mbps miniPCI Wireless Card
- 5.150-5.850 GHz, 19 dBi Integrated Flat Panel Antenna
- 18V Power Supply Unit with PoE injector (PoE over Datalines not Supported)



RBI-1956AP

RouterBOARD Specifications



RB/411

CPU	MIPS24k Based, Atheros Ar7161 680MHz CPU
Memory	64MB SDRAM Onboard Memory
Data Storage	Data Storage 128MB Onboard NAND Memory Chip
Ethernet	One 10/100 Mbit/s Fast Ethernet Ports Supporting Auto-MDI/X
MiniPCI Slot	One MiniPCI Type IIIA/IIIB Slot
Power Options	Power over Ethernet: 12..28V DC (except power over datalines)
Power Jack	10..28V DC
Temperature Operational	-20°C to +65°C (-4°F to 149°F)
Power Consumption	3-4W Without Extension Cards, Maximum – 12W

RF Module Specifications

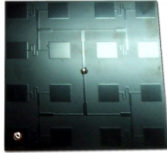


R52

Frequencies	802.11b/g 2.312 – 2.497 (5 MHz Step); 802.11a 4.920 – 6.100 (5 MHz Step)
Chipset	Atheros AR5414
Security	Hardware 64 and 128 bit WEP; Hardware TKIP and AES-CCM Encryption; 802.1x WPA Authentication
Modulation	802.11b+g: DSSS, OFDM for Data Rate >30Mbps 802.11a: OFDM
Host Interface	Mini-PCI Form Factor; Mini-PCI Version 1.0 Type 3B
Output Power/Rx Sensitivity	802.11a : 17dBm/-88dBm @ 6Mbps 13dBm/-71dBm @ 54Mbps 802.11b : 19dBm/-95dBm @ 1Mbps 19dBm/-90dBm @ 11Mbps 802.11g : 18dBm/-90dBm @ 6Mbps 15dBm/-73dBm @ 54Mbps
Transfer Data Rate	802.11b : 11,5.5,2,1 Mbps, auto-fallback 802.11g (Normal mode) : 54,48,36,24,18,12,9,6 Mbps, Auto-Fallback 802.11g (Turbo mode) : 108,96,72,48,36,24,18,12 Mbps, Auto-Fallback 802.11a (Normal mode) : 54,48,36,24,18,12,9,6 Mbps, Auto-Fallback 802.11a (Turbo mode) : 108,96,72,48,36,24,18,12 Mbps, Auto-Fallback
Supported OS	MikroTik RouterOS, Windows XP
Connectors	Two U.fl Connectors

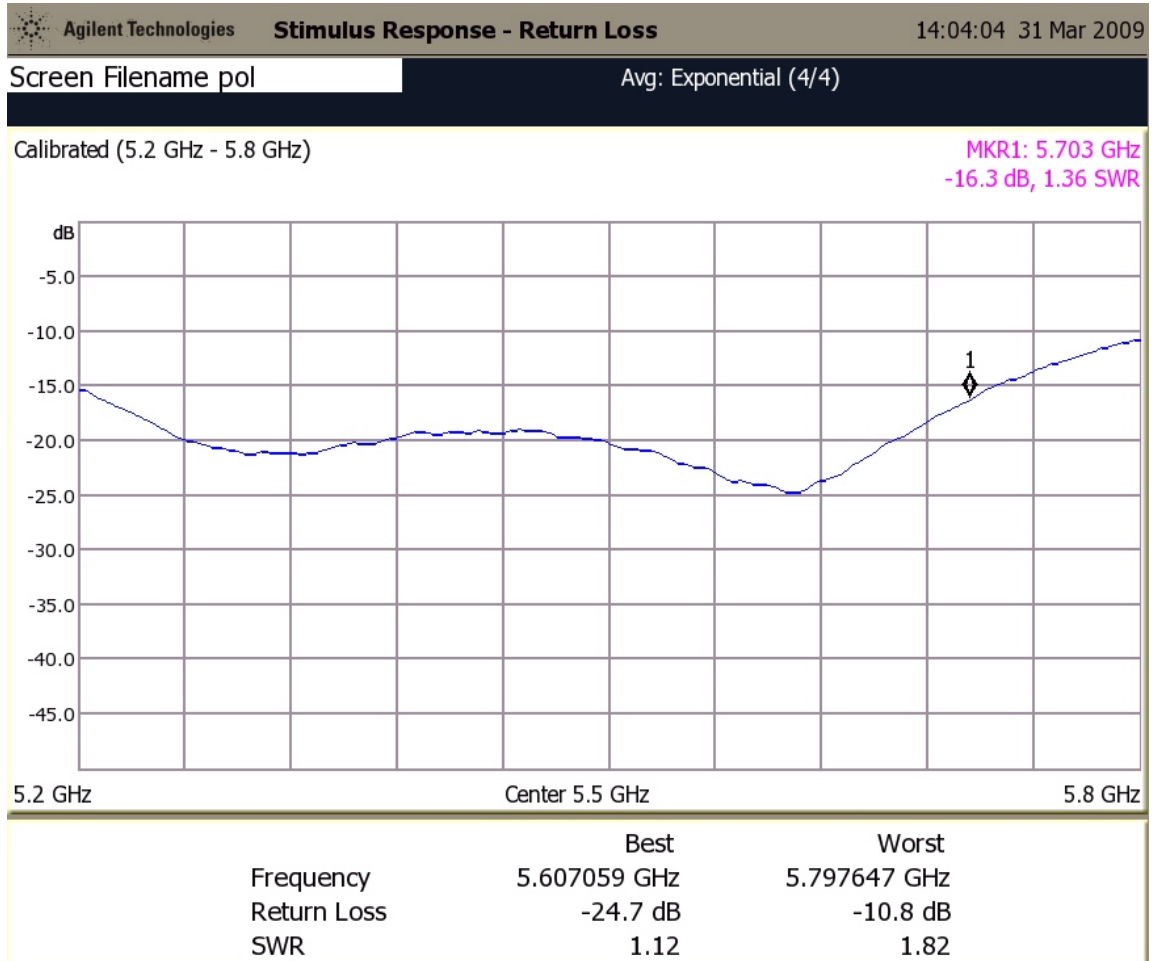
RBI-1956AP

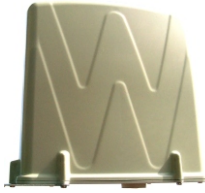
Antenna Specifications



VS-26PCB56

Frequency Range, GHz	5.150 - 5.850
Gain	18.5dBi +/- 0.5dB
VSWR	1.5 : 1
3dB Beamwidth	18.0 deg +/- 1.0 deg
Front-to-Back Ratio	27dB
Polarization	Vertical and Horizontal
CPR	29dB
Connector	RP-SMA Female





RBI-1956C

Enclosure Size, mm	202 x 189 x 84
Weight, Kg	0.300
Enclosure Characteristics	Outdoor UV Resistant Plastic Cover
Mounting Kit	Adjustable (Azimuth & Elevation)
Power Supply Unit	18V, 1.2A Power Supply and PoE Injector Included
Power Method	Passive Power over Ethernet

