

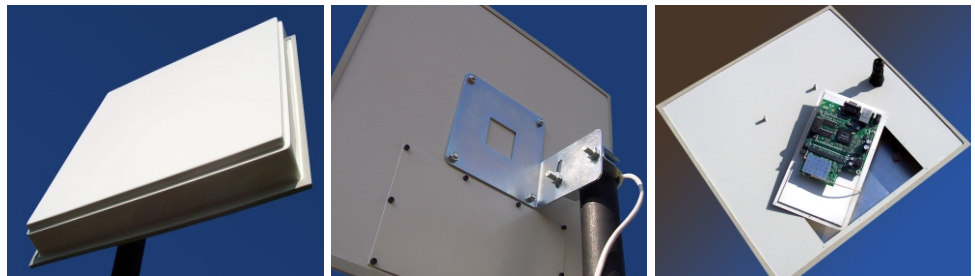


**VESUVIUS
STREAMLINE**

Datasheet

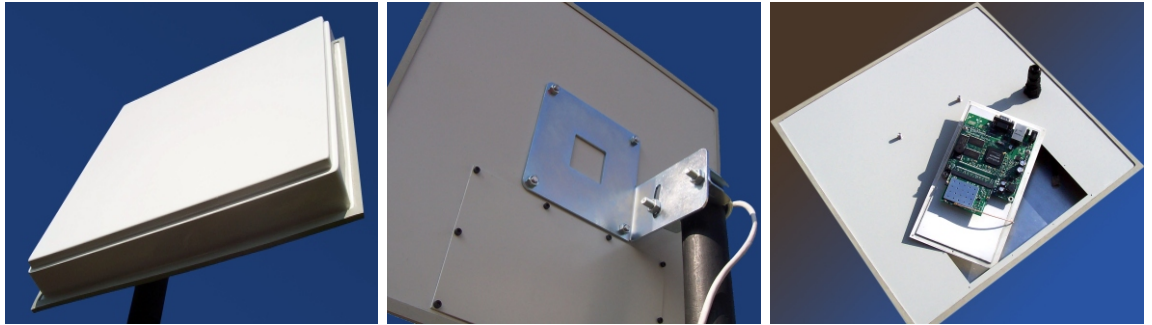
RBI-1956N Series

200 Mbps Wireless Data Transfer



- 2 x 5-6 GHz, 19dBi Antenna with RouterBOARD 411AH
- Mikrotik RouterOS Level 4
- 802.11 a/b/g/n 100 mW Wireless miniPCI Card
- 18V Power Supply + PoE Injector

RBI-1956N



Description

The RBI-1956N 5GHz integrated router antenna is an advanced, cost effective wireless solution, designed for high speed backbone links, including high performance wireless router with Power over Ethernet (PoE) feature and two directional 19 dBi antennas, all embedded in UV stabilized plastic enclosure.

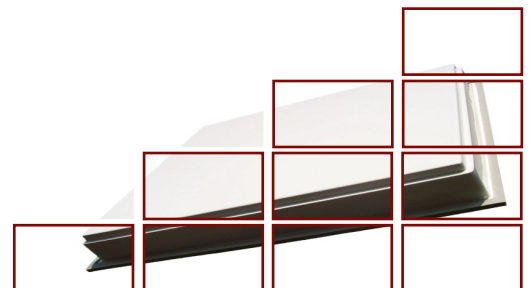
The RBI-1956N now includes the powerful RB/411AH board with Atheros AR7161 680MHz CPU and 64 MB RAM, perfect for carrier class applications.

Based on **802.11n** standard with **2 x MIMO**, it's an excellent solution for Point-to-Point links, where very high throughput is needed.

The RBI-1956N is very easy to install thanks to the power and data supply over a single Category 5 ethernet cable. This allows excellent flexibility of the package positioning, decreases installation costs and significantly reduces cabling and outlet requirements, especially in hard-to-reach places.

Package includes:

- Mikrotik RouterBOARD 411AH with Atheros AR7161 680MHz CPU, 64 MB RAM, One LAN Port
- MikroTik RouterOS with Level4 License
- Mikrotik R52N 802.11a+b+g+n miniPCI Wireless Card
- 5.150-5.850 GHz, 19 dBi Integrated Flat Panel Antenna
- 18V Power Supply Unit with PoE injector (PoE over Datalines not Supported)



RBI-1956N

RouterBOARD Specifications



RB/411AH

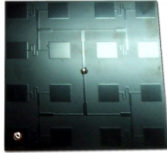
CPU	MIPS24k Based, Atheros Ar7161 680MHz CPU
Memory	64MB SDRAM Onboard Memory
Data Storage	Data Storage 128MB Onboard NAND Memory Chip
Ethernet	One 10/100 Mbit/s Fast Ethernet Ports Supporting Auto-MDI/X
MiniPCI Slot	One MiniPCI Type IIIA/IIIB Slot
Power Options	Power over Ethernet: 12..28V DC (except power over datalines)
Power Jack	10..28V DC
Temperature Operational	-20°C to +65°C (-4°F to 149°F)
Power Consumption	3-4W Without Extension Cards, Maximum – 12W

RF Module Specifications



R52N

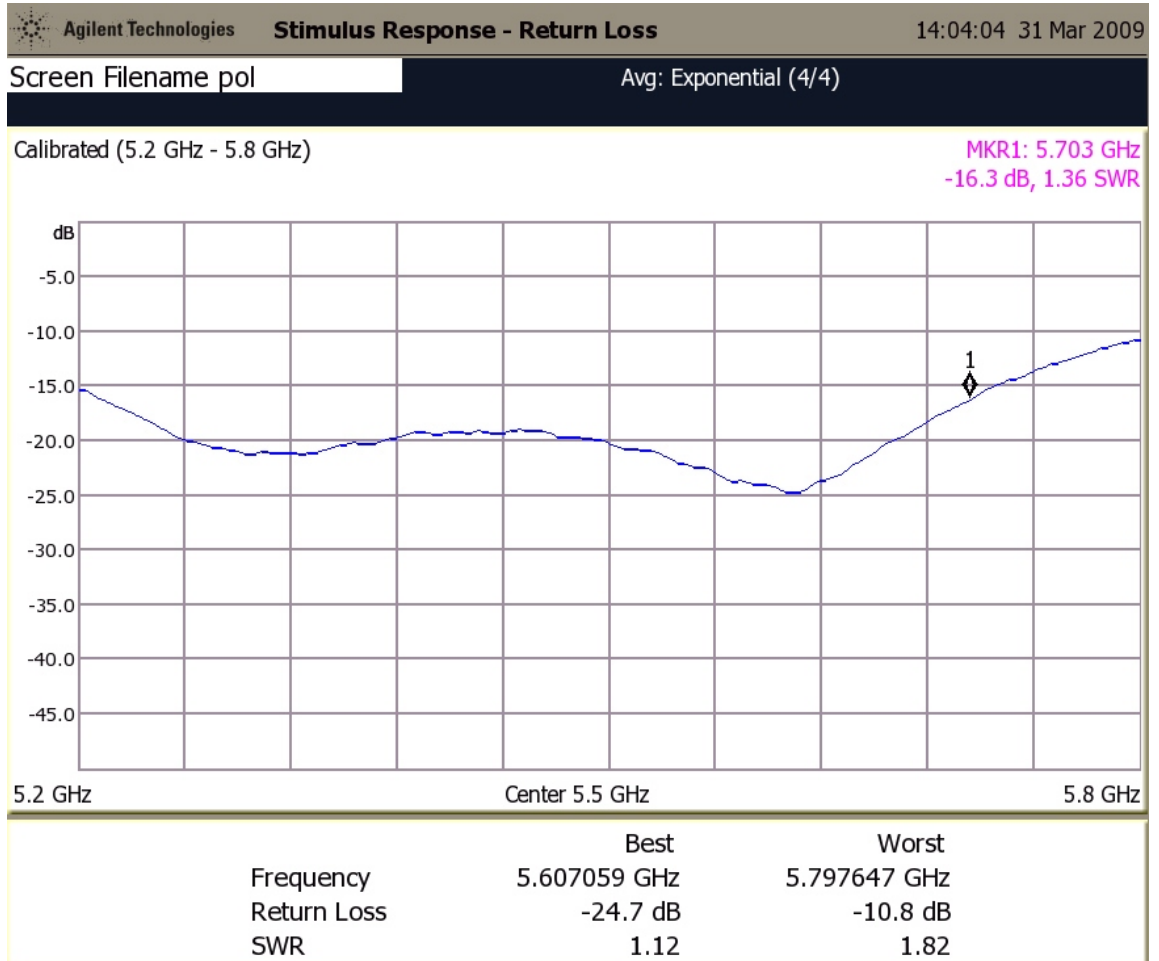
Frequencies	802.11b/g 2.312 – 2.497 (5 MHz Step); 802.11a 4.920 – 6.100 (5 MHz Step)
Chipset	Atheros AR9220
Security	Hardware 64 and 128 bit WEP; Hardware TKIP and AES-CCM Encryption; 802.1x WPA Authentication
Modulation	OFDM: BPSK, QPSK, 16 QAM, 64QAM DSSS: DBPSK, DQPSK, CCK
Host Interface	Mini-PCI Form Factor; Mini-PCI Version 1.0 Type 3B
Output Power/Rx Sensitivity	802.11a: 21dBm/-97/-95dBm @ 6Mbps 19dBm/-80/-79dBm @ 54Mbps 802.11b: 23dBm/-95/-94dBm @ 1Mbps 23dBm/-92dBm @ 11Mbps 802.11g: 25dBm/-95/-94dBm @ 6Mbps 21dBm/-80dBm @ 54Mbps 802.11n 5GHz: MCS0 20MHz: 21/19 dBm / -97/-95dBm MCS0 40MHz: 19 dBm / -93/-91dBm MCS7 20MHz: 16 dBm / -78/-76dBm MCS7 40MHz: 13 dBm / -75/-73dBm
Transfer Data Rate	802.11b: 11Mbps; 5.5Mbps; 2Mbps; 1Mbps 802.11a/g: 54Mbps; 48Mbps; 36Mbps; 24Mbps; 18Mbps; 12Mbps; 9Mbps; 6Mbps 802.11n (20MHz): 1Nss: 65Mbps @ 800GI, 72.2Mbps @ 400GI (Max.) 2Nss: 130Mbps @ 800GI, 144.4Mbps @ 400GI (Max.) 802.11n (40MHz): 1Nss: 135Mbps @ 800GI, 150Mbps @ 400GI (Max.) 2Nss: 270Mbps @ 800GI, 300Mbps @ 400GI (Max.)
Connectors	Two U.fl Connectors



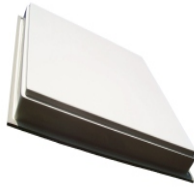
2 x VS-19PCB56

Vertical and Horizontal Polarized

Frequency Range, GHz	5.150 - 5.850
Gain	18.5dBi +/- 0.5dB
VSWR	1.5 : 1
3dB Beamwidth	18.0 deg +/- 1.0 deg
Front-to-Back Ratio	27dB
Polarization	Vertical and Horizontal
CPR	29dB
Connector	RP-SMA Female



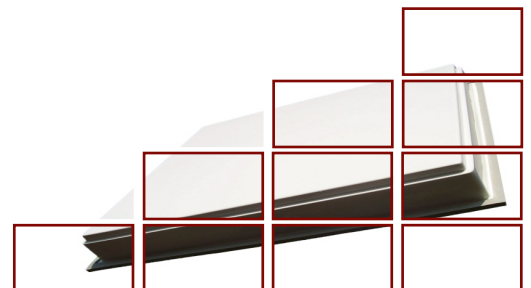
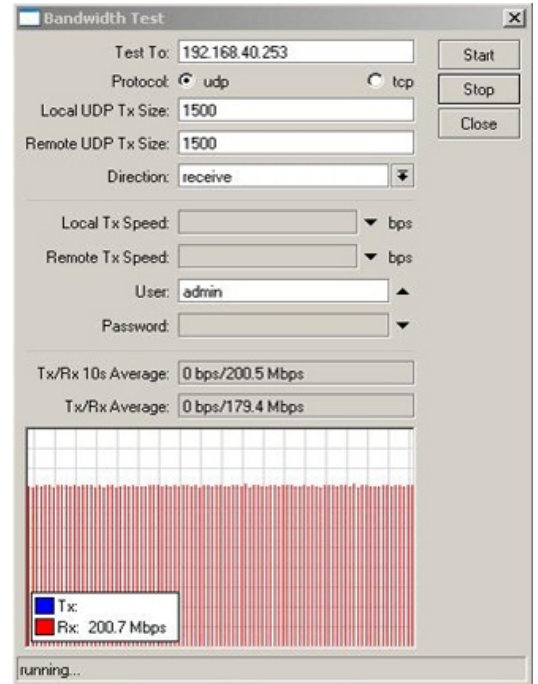
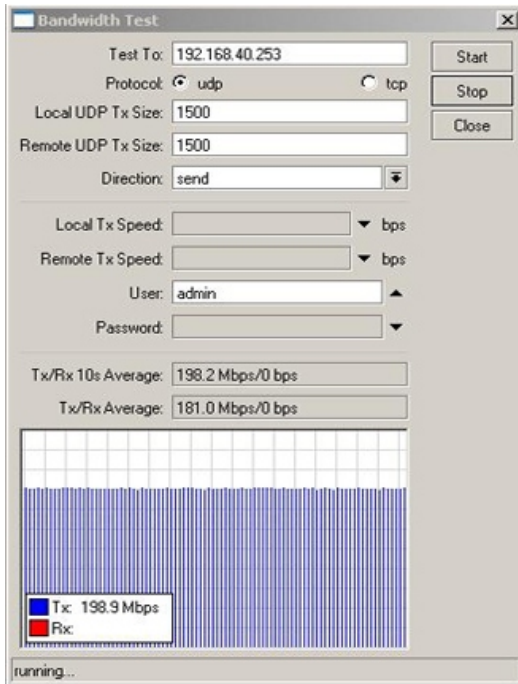
Physical & Electrical Specifications



RBI-1956N

Enclosure Size, mm	405 x 405 x 63
Weight, Kg	2.800
Enclosure Characteristics	Outdoor UV Resistant Plastic Cover
Mounting Kit	Adjustable (Azimuth & Elevation)
Power Supply Unit	18V, 1.2A Power Supply and PoE Injector Included
Power Method	Passive Power over Ethernet

Screenshots - 2.5 km Outdoor Test



RBI-1956N